

# RODAN+FIELDS® REDEFINE

AMP MD™ System  
For Firmer-Looking Skin



RODAN+FIELDS®

# Decide today how you are going to look tomorrow.

Young skin has healthy amounts of collagen and elastin fibers, keeping it firm and supple. Physiological changes, environmental factors (especially sun exposure) and detrimental lifestyle choices like smoking, all contribute to our skin's loss of these supportive fibers as we age. With a reduction of collagen and elastin, we see sagging, wrinkles and noticeably enlarged pores. Thankfully, the right skincare can help maintain skin's youthful appearance and defend against the effects of time and the environment. The end result: a visibly firmer, more radiant and flawless-looking complexion.

So start today. We are all aging all the time, but what that looks like is up to you.

*Kathie Rodan M.D. Kathy Fields, M.D.*

## How Does the **AMP MD™** System Work?

Take a firm position on aging skin with our patent-pending **REDEFINE AMP MD™** System. The noninvasive **AMP MD** Micro-Exfoliating Roller and **REDEFINE** Night Renewing Serum are clinically proven to safely and effectively amp up your daily skincare routine for a firmer, more youthful appearance. Recommended for use with **REDEFINE** Regimen for best results. Used as directed, the **AMP MD** System:

- Conditions the skin's surface using micro-needle tips.
- Increases appearance of firmness and elasticity.
- Reduces the appearance of fine lines and wrinkles.
- Improves skin texture and minimizes the appearance of pores with a proprietary blend of retinol and peptides.



## What You Can Expect To See

With regular use of the **REDEFINE** Regimen and the **AMP MD** System, your skin will appear firmer, lines and wrinkles will be less noticeable, pores will look tighter, and your complexion will become more luminous and refined.

BEFORE TREATMENT



AFTER TREATMENT

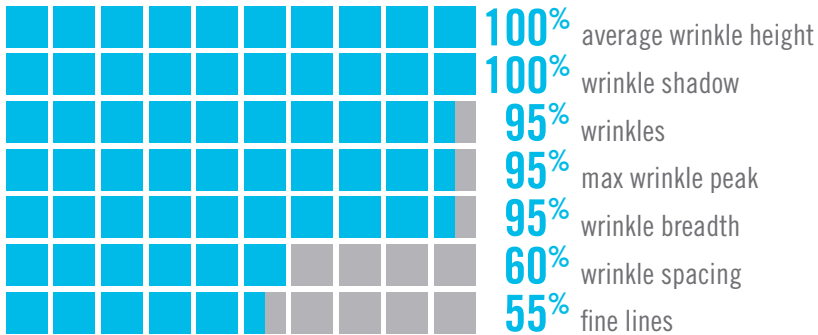


*Unretouched photos after 4 weeks of use. Results may vary.*

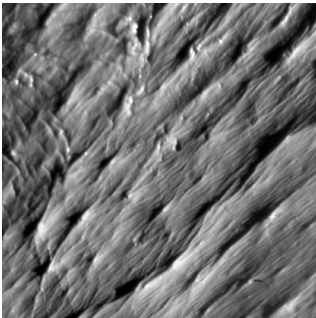
## REDEFINE Results

After eight weeks of **REDEFINE** Regimen and **AMP MD** System use, participants in an independent clinical study achieved the following results:\*

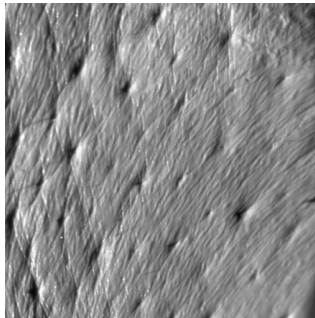
### PERCENT OF PARTICIPANTS EXPERIENCING AN IMPROVEMENT



BEFORE TREATMENT\*\*



AFTER TREATMENT\*\*



\*Results may vary.  
\*\*Skin replicas of crow's feet.

## Using AMP MD System nightly with the REDEFINE Regimen

---



# 1

### REDEFINE Daily Cleansing Mask

Creamy, kaolin clay-based cleansing mask dries in two minutes, drawing impurities from pores without robbing skin of essential moisture. Fine dimethicone micro-beads gently exfoliate to smooth the skin without disrupting skin's delicate moisture barrier.

---



# 2

### REDEFINE Pore Minimizing Toner

Exclusive combination of pore-tightening ingredients minimizes the appearance of enlarged pores in this fast-acting, alcohol-free liquid vehicle. Gentle poly-hydroxy acids exfoliate pore-clogging dead skin cells while natural oligosaccharides help reduce the appearance of pores.

---



## AMP Up Your Results

### AMP MD System

AMP MD Micro-Exfoliating Roller utilizes stainless steel micro-needle tips to safely condition the uppermost layer of skin.

+

### REDEFINE Night Renewing Serum

Potent, proprietary blend of peptides and retinol visibly improves skin texture and firmness and reduces the appearance of wrinkles. Retinol, favored by dermatologists for decades, improves skin texture and minimizes the appearance of pores. Patented time-release technology increases skin's receptivity throughout the night while reducing potential irritation.

---



# 3 pm

### REDEFINE Overnight Restorative Cream

Ultra-hydrating cream replenishes skin's natural moisturizing factors (NMFs) while you sleep for visibly firmer, less-lined skin in the morning. Contains a clinically-proven concentrations of peptides and niacinamide to help minimize the appearance of wrinkles and to help maintain firmer-looking skin. Moisture recycling complex of hyaluronic acid and glycerin helps prevent moisture loss while 12-hour, time-released antioxidants A, C and E help replenish vital skin nutrients.

## CARING FOR YOUR AMP MD

After each use, rinse the **AMP MD** Micro-Exfoliating Roller with very warm running water. Twice per week, clean thoroughly using an **AMP MD** Purification Tablet:

- Fill Cleansing Vial with very warm (not hot) water to marked fill line.
- Snap the handle of the **AMP MD** Micro-Exfoliating Roller into the cap of the cleansing vial.
- Drop one Purification Tablet into water and immediately immerse the **AMP MD** Micro-Exfoliating Roller, making sure the head is fully submerged.
- When blue color fades, after approximately 15 minutes, remove the **AMP MD** Micro-Exfoliating Roller and rinse thoroughly under very warm running water. Discard used solution. Do not allow the **AMP MD** Micro-Exfoliating Roller to remain in purification solution overnight.

## RESPECT THE MICRO-NEEDLE TIPS

The **AMP MD** Micro-Exfoliating Roller is constructed of the highest quality micro-needle tips. Always store your roller in the clear storage case or snapped into the cap of the Cleansing Vial. Do not place the roller head directly on hard surfaces or counter tops.

## Getting Started with the AMP MD System

For best results, follow the schedule below:

	DAY 1	DAY 2	DAY 3	DAY 4	DAY 5	DAY 6	DAY 7
MORNING <b>REDEFINE</b> Regimen	•	•	•	•	•	•	•
EVENING <b>REDEFINE</b> Regimen	•	•	•	•	•	•	
+ <b>AMP MD</b> System							
+ <b>MACRO</b> Exfoliator							•

- Each morning, use **REDEFINE** Daily Cleansing Mask, Pore Minimizing Toner and Triple Defense Treatment.
- Each evening, for advanced firming results use **REDEFINE** Daily Cleansing Mask, Pore Minimizing Toner, **AMP MD** Micro-Exfoliating Roller, Night Renewing Serum and Overnight Restorative Cream.
- To reveal your smoothest, freshest-looking skin, incorporate the **REDEFINE MACRO Exfoliator** into your nighttime skincare routine once per week.

## How Do You Roll?

- Divide face into sections (forehead, right side, left side, chin and neck) and with moderate and comfortable pressure, roll **AMP MD** Micro-Exfoliating Roller over each section 4-10 times, changing directions with each pass, as illustrated:



- After rolling, apply contents of one **REDEFINE** Night Renewing Serum capsule to entire face and neck and follow with Overnight Restorative Cream to help fortify the skin's protective barrier.

# Frequently Asked Questions

## How often should I use the AMP MD System?

For best results, we recommend that the AMP MD System be used as directed with the REDEFINE Regimen at least three nights a week and advancing to nightly use as tolerated. If using both AMP MD System and the MACRO Exfoliator™, do not use AMP MD System on the day that you macro-exfoliate.

## Can I use the AMP MD System with the MACRO Exfoliator?

Yes, the AMP MD System and the MACRO Exfoliator can be used in conjunction with each other but should not be used on the same day. This means that if you are using both, use the AMP MD System six days a week and the MACRO Exfoliator one day per week. Do not use REDEFINE Night Renewing Serum on the day that you macro-exfoliate.

## Can I use the AMP MD Micro-Exfoliating Roller with other products?

The AMP MD Micro-Exfoliating Roller is clinically tested for use only with the REDEFINE Regimen, REDEFINE Night Renewing Serum and REDEFINE Lip Renewing Serum. We do not advise that this tool be used with any other products or medications.

## How long can I use my AMP MD Micro-Exfoliating Roller before it needs to be replaced?

The AMP MD Micro-Exfoliating Roller is constructed with the highest quality micro-needle tips for maximum efficacy. When used nightly, the AMP MD Micro-Exfoliating Roller is designed to last for up to 12 months. If you use your roller for demonstration purposes, you may find that it maintains its precision for closer to six to nine months.

## Can I use the REDEFINE Regimen and the AMP MD System if I'm pregnant or nursing?

We always recommend that you consult your doctor before using any skincare products or tools when you are pregnant or nursing.

## Can you share the AMP MD Micro-Exfoliating Roller?

The AMP MD Micro-Exfoliating Roller is recommended to be used on one person.

## My face is red after using the REDEFINE Regimen and AMP MD System. Is this normal?

The skin may become red/irritated if your skin is sensitive or if too much pressure is applied when using the AMP MD Micro-Exfoliating Roller. We recommend lessening the pressure you apply, and rolling slowly across your skin using long sweeping lines. Do not change direction without lifting the roller off your face. The AMP MD System is not recommended for use on very sensitive skin. Sensitive skin, by definition, has a compromised barrier and needs to be strengthened with the OTC-approved skin protectant ingredients dimethicone and allantoin, as found in the SOOTHE Regimen.